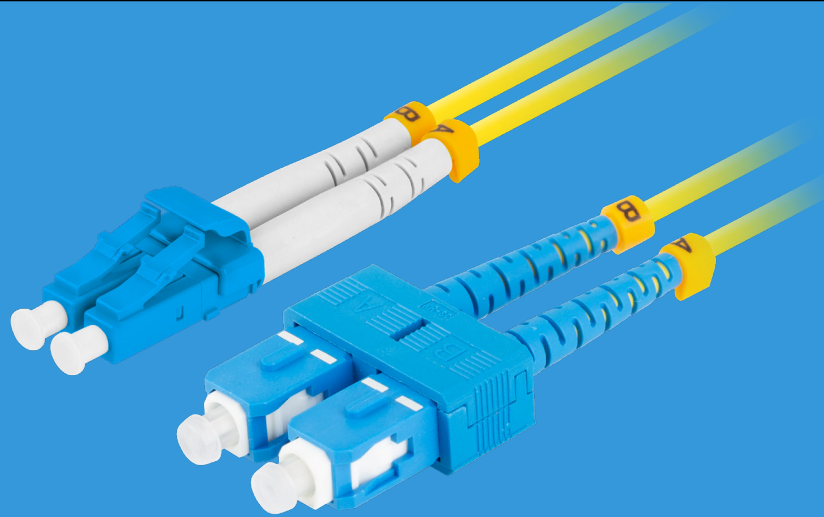


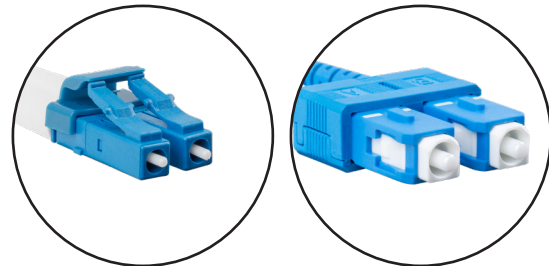
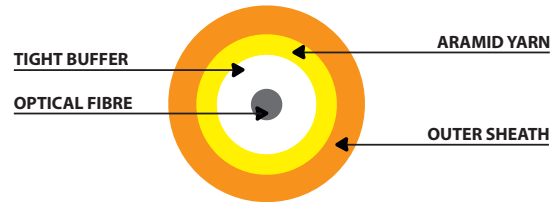
FO-SULU-SD11-0___-YE

FIBER OPTIC PATCHCORD



PRODUCT SPECIFICATION:

- Connector type: SC, LC
- Polishing standard: UPC - ULTRA PHYSICAL CONTACT
- Fiber type: G657A1
- Type of optical fiber: single-mode (SM)
- Fiber diameter: 9/125 μm
- Cable Construction: DUPLEX
- Cable diameter: 3.0 mm
- Coating: LSZH, LSOH (Low smoke zero halogen)
- Insertion loss: ≤ 0,25 dB
- Return loss: ≥ 50 dB
- Operating temperature: -40 – 85°C
- Minimum bend radius: 10 mm
- Color: Yellow
- Cable length: 1 m, 2 m, 5 m



| CAT.NO | FULL NAME |
|----------------------|---|
| FO-SULU-SD11-0010-YE | FIBER OPTIC PATCHCORD SM SC/UPC-LC/UPC DUPLEX 3.0MM LSZH G657A1 1M YELLOW LANBERG |
| FO-SULU-SD11-0020-YE | FIBER OPTIC PATCHCORD SM SC/UPC-LC/UPC DUPLEX 3.0MM LSZH G657A1 2M YELLOW LANBERG |
| FO-SULU-SD11-0050-YE | FIBER OPTIC PATCHCORD SM SC/UPC-LC/UPC DUPLEX 3.0MM LSZH G657A1 5M YELLOW LANBERG |