



**Cable ID: PCF8-10CU-0500**

Test Limit: ISO11801 Channel Class I (+All)

Limits Version: V7.8

Date / Time: 11/30/2023 04:02:21 PM

Operator: QC

Headroom 19.9 dB (NEXT 3,6-7,8)

Cable Type: Cat 8 S/FTP

NVP: 72.0%

Main: Versiv

S/N: 1824298

Software Version: V6.9 Build 2

Calibration Date: 12/02/2022

Adapter: DSX-8000 (DSX-CHA804)

S/N: 23050129

**Test Summary: PASS**

Remote: Versiv

S/N: 1820302

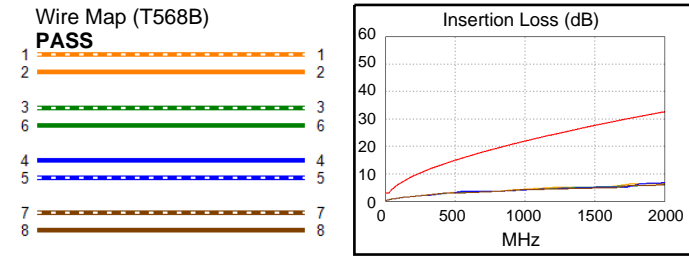
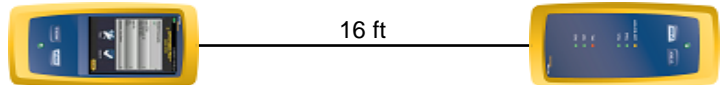
Software Version: V6.9 Build 2

Calibration Date: 12/02/2022

Adapter: DSX-8000R (DSX-CHA804)

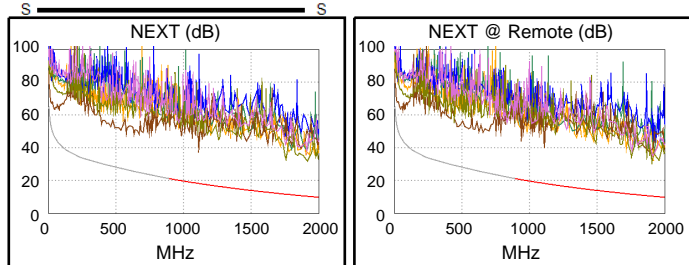
S/N: 23050130

Length (ft)	[Pair 4,5]	16
Prop. Delay (ns), Limit 169	[Pair 7,8]	24
Delay Skew (ns), Limit 16	[Pair 1,2]	1
Resistance (ohms), Limit 6.40	[Pair 1,2]	1.16
Resist. Unbal. (ohms), Limit 0.200	[Pair 3,6]	0.024
Resist. P2P Unbal. (ohms), Limit 0.200	[Pair 1,2-3,6]	0.137
Insertion Loss Margin (dB)	[Pair 4,5]	24.4
Frequency (MHz)	[Pair 4,5]	1868.0
Limit (dB)	[Pair 4,5]	31.4

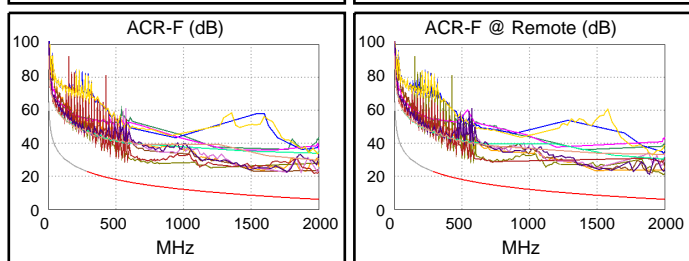


**Worst Case Margin Worst Case Value**

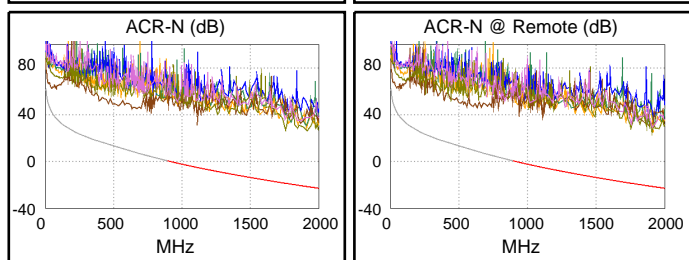
PASS	MAIN	SR	MAIN	SR
Worst Pair	3,6-7,8	3,6-7,8	3,6-7,8	3,6-7,8
<b>NEXT (dB)</b>	20.3	19.9	20.3	19.9
Freq. (MHz)	1910.	1908.	1910.	1908.
Limit (dB)	10.3	10.3	10.3	10.3
Worst Pair	3,6	7,8	3,6	7,8
<b>PS NEXT (dB)</b>	21.8	21.6	21.8	21.6
Freq. (MHz)	1910.	1910.	1910.	1910.
Limit (dB)	7.3	7.3	7.3	7.3



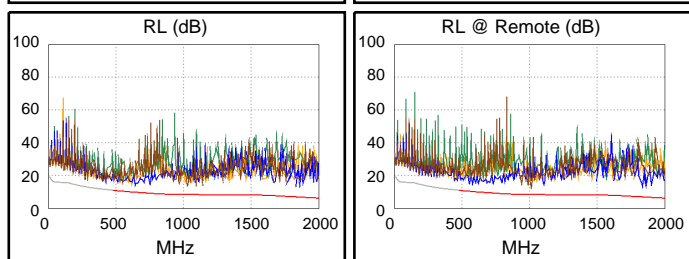
PASS	MAIN	SR	MAIN	SR
Worst Pair	3,6-4,5	4,5-3,6	3,6-1,2	1,2-3,6
<b>ACR-F (dB)</b>	12.2	12.5	13.2	13.9
Freq. (MHz)	587.0	586.0	1926.	1928.
Limit (dB)	16.6	16.6	6.3	6.3
Worst Pair	3,6	3,6	1,2	3,6
<b>PS ACR-F (dB)</b>	13.8	14.1	15.9	15.2
Freq. (MHz)	1488.	1610.	1928.	1882.
Limit (dB)	5.5	4.8	3.3	3.5



PASS	MAIN	SR	MAIN	SR
Worst Pair	3,6-4,5	3,6-4,5	3,6-7,8	3,6-7,8
<b>ACR-N (dB)</b>	41.0	42.8	46.4	46.0
Freq. (MHz)	1113.	1109.	1910.	1908.
Limit (dB)	-5.2	-5.1	-21.5	-21.5
Worst Pair	4,5	4,5	3,6	7,8
<b>PS ACR-N (dB)</b>	43.9	45.6	47.9	47.7
Freq. (MHz)	1113.	1109.	1910.	1910.
Limit (dB)	-8.2	-8.1	-24.5	-24.5



PASS	MAIN	SR	MAIN	SR
Worst Pair	4,5	4,5	7,8	7,8
<b>RL (dB)</b>	4.4	4.6	5.7	4.6
Freq. (MHz)	642.0	578.0	1028.	1011.
Limit (dB)	9.7	10.1	8.0	8.0



Compliant Network Standards:  
 10BASE-T 100BASE-TX 100BASE-T4  
 1000BASE-T 2.5GBASE-T 5GBASE-T  
 10GBASE-T 25GBASE-T 40GBASE-T  
 ATM-25 ATM-51 ATM-155  
 100VG-AnyLan TR-4 TR-16 Active  
 TR-16 Passive



**Cable ID: PCF8-10CU-0500**

**Test Limit: ISO11801 Channel Class I (+All)**

Limits Version: V7.8

Date / Time: 11/30/2023 04:02:21 PM

Operator: QC

**Headroom 19.9 dB (NEXT 3,6-7,8)**

Cable Type: Cat 8 S/FTP

NVP: 72.0%

Main: Versiv

S/N: 1824298

Software Version: V6.9 Build 2

Calibration Date: 12/02/2022

Adapter: DSX-8000 (DSX-CHA804)

S/N: 23050129

**Test Summary: PASS**

Remote: Versiv

S/N: 1820302

Software Version: V6.9 Build 2

Calibration Date: 12/02/2022

Adapter: DSX-8000R (DSX-CHA804)

S/N: 23050130

	Worst Case Margin		Worst Case Value	
	MAIN	SR	MAIN	SR
<b>PASS</b>				
Worst Pair	7,8	4,5	7,8	4,5
<b>TCL (dB)</b>	15.8	17.0	15.8	17.0
Freq. (MHz)	1754.	1948.	1754.	1948.
Limit (dB)	3.0	3.0	3.0	3.0
<b>N/A</b>				
Worst Pair			7,8-3,6	7,8-3,6
<b>CDNEXT (dB)</b>			24.2	23.8
Freq. (MHz)			1041.	948.0
Limit (dB)				
<b>N/A</b>				
Worst Pair			3,6	3,6
<b>CMRL (dB)</b>			7.1	7.2
Freq. (MHz)			593.0	681.0
Limit (dB)				
<b>PASS</b>				
Worst Pair	1,2	1,2	1,2	1,2
<b>ELTCTL (dB)</b>	10.0	12.9	10.0	12.9
Freq. (MHz)	1920.	1760.	1920.	1760.
Limit (dB)	3.0	3.0	3.0	3.0

