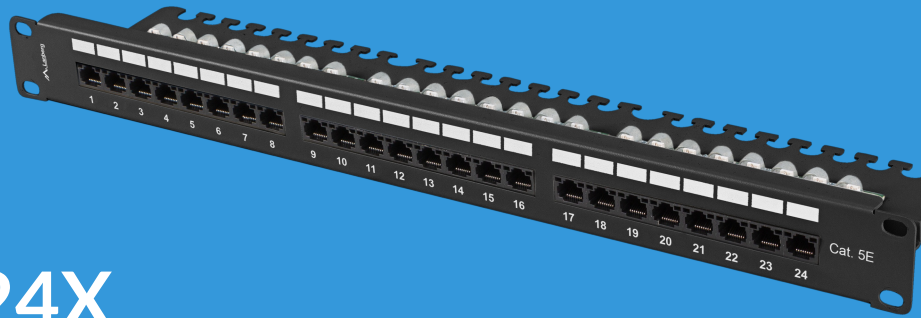


PPU5-1124-B

PATCH PANEL 24X KAT.5E 1U 19"



PRODUCT FEATURES:

- 24x RJ-45 CAT.5E unshielded
- Universal IDC/LSA connectors compatible with T568A/B
- Shelf with handles for easy mounting and organization
- Port numbering
- Metal cable holders

PRODUCT SPECIFICATION:

Number of ports	24
Connector type	Equipped
Size	19",
ICT height	1 U
ICT category	Cat. 5/5e
Shielding	No
Grounding	No
Adapted for cables	20-26 AWG
Equipped with connectors	Yes
Durability of the slot connector	200 cycles
Fitting type	IDC/LSA
Material	Steel
Standard	T568A, T568B
Ports identification in the form of numbered fields	Yes
Connector length	21,5 mm
Impedance	75 Ohm
Insertion loss	<, 0.2 dB
RAL color	RAL9004
Colour	Black
Dimensions	98 x 482,6 x 44,45 mm
Weight	0,9 kg
Environment temperature	from -10 up to 60 °C
Included Accessories	Cable manager, M6 screws, Integrated cable shelf

